

Investment (Hotel) in Platres (Pano), Limassol for sale

€1,750,000

REF. NUMBER:	#SA25652
PLOT AREA:	756m ²
COVERED AREA:	900m ²
BEDROOMS:	25
BATHROOMS:	27
TOILETS:	27
FLOORS:	2
YEAR OF BUILD:	1970



✓ Furnished
✓ Kitchen

✓ Reception
✓ Fire Place

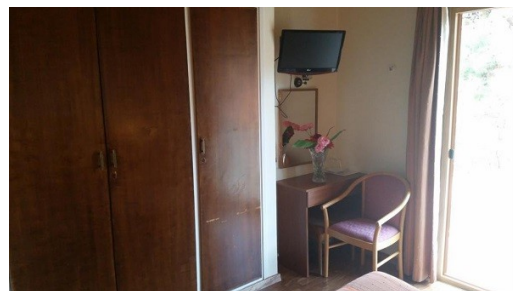
✓ Heating

✓ Air Condition

✓ Mountain View



Investment (Hotel) in Platres (Pano), Limassol for sale





Investment (Hotel) in Platres (Pano), Limassol for sale

Description

The Edelweiss Hotel is a two star licensed countryside hotel situated on the prestigious hills of Pano Platres and surrounded by pine trees thus creating a harmonious and relaxing environment. The Hotel offers a truly cozy traditional design with 25 comfortable guest rooms with views to the valley, an Austrian style restaurant a bar and outdoor sitting areas and garden. The hotel is primely situated in the heart of Pano Platres within close proximity to the centre of the village and ample of facilities and other dining places. The location is excellent for all day relaxing strolls.

- All rooms offer a balcony
- valley and mountain view rooms
- countryside view rooms
- possibility for swimming pool addition
- allowance for an additional floor with capacity of 12 rooms
- separate title deed
- full member of the Cyprus Hotel Association

This unique beautiful property is offer for sale ,exclusive from our office.

